

HD

Epson UltraChrome HD Ink

8-Color

HDX

Epson UltraChrome HDX Ink

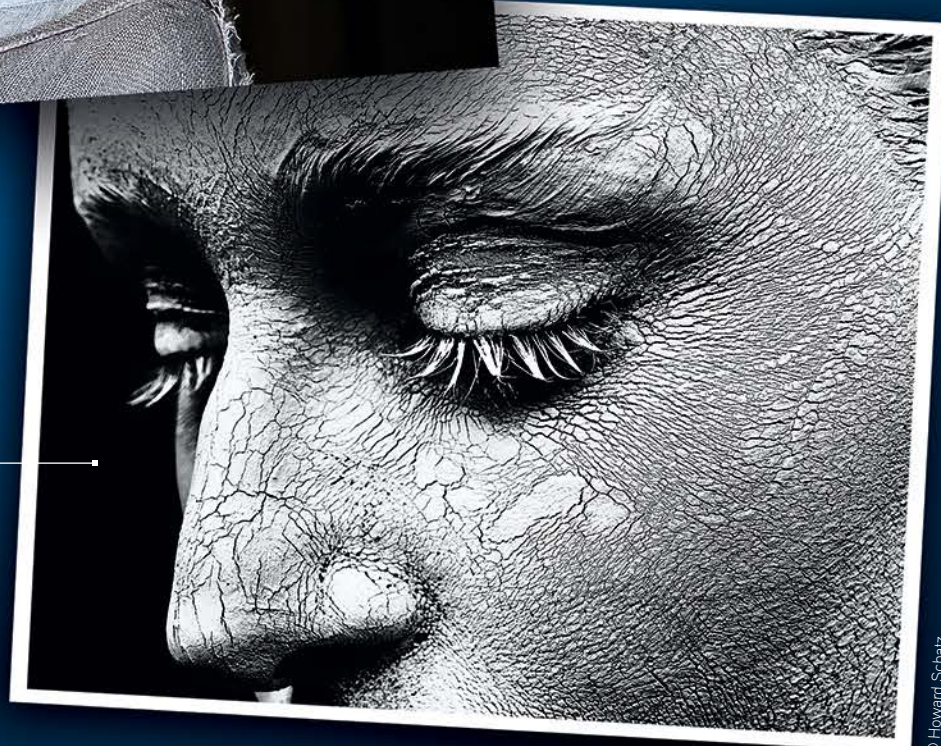
10-Color
Standard Edition



Three-Level Black Inks

A combination of Black, Light Black and Light Light Black inks creates smooth, neutral tonal transitions, while bringing out even the most subtle details — for both color and black-and-white prints.

© Steve McCurry



© Howard Schatz

Increased Black Density

Higher-density Black pigments anchor the darkest possible tone in the print, producing a wider contrast ratio, resulting in optically clearer and sharper images.

Superior Color and Detail

The all-new Epson Precision Dot screening algorithm optimizes ink mixing and ensures precise variable-sized droplet shape and placement — resulting in beautiful, continuous-tone prints.

© Tim Tisdler



HDX

Epson UltraChrome HDX Ink

Expanded Gamut

Featuring Orange and Green inks, the Epson UltraChrome HDX 10-color ink set delivers 98 percent PANTONE FORMULA GUIDE solid-coated color match. As for the remaining 2 percent, our all-new Violet ink reduces the unmatched colors by half — allowing us to achieve a new industry best of 99 percent!



PANTONE® 226 C
PANTONE® 2592 C



Commercial Proofing

The expanded-gamut UltraChrome HDX pigment ink set continues our tradition of meeting high-performance standards for color accuracy and stability — proofs are ready within minutes. It's just one of the reasons why Epson printers have been the #1 choice of prepress professionals for the last decade.



GLUTENETTO™
ARTISANAL ITALIAN COOKIES

GLUTENETTO™
ARTISANAL ITALIAN COOKIES

OUR STORY

We have been sharing cookies since our childhood in the southern Italian village of Sant'Elia. Today, we believe everyone deserves the pleasure of a perfect cookie, so we devote ourselves to what we love best: artisanal cookies that melt your heart.

To share these wonderful flavors, we started Cookies con Amore, where we bake our favorite traditional Italian cookie recipes. Now we've created Glutenetto, our gluten-free cookies that give as much delight as our classic, seasonal, and sugar-free cookies.

Baking is our passion, and Glutenetto is a true labor of love. We put our hearts and the finest ingredients into every cookie and never compromise. We're Italian, after all!

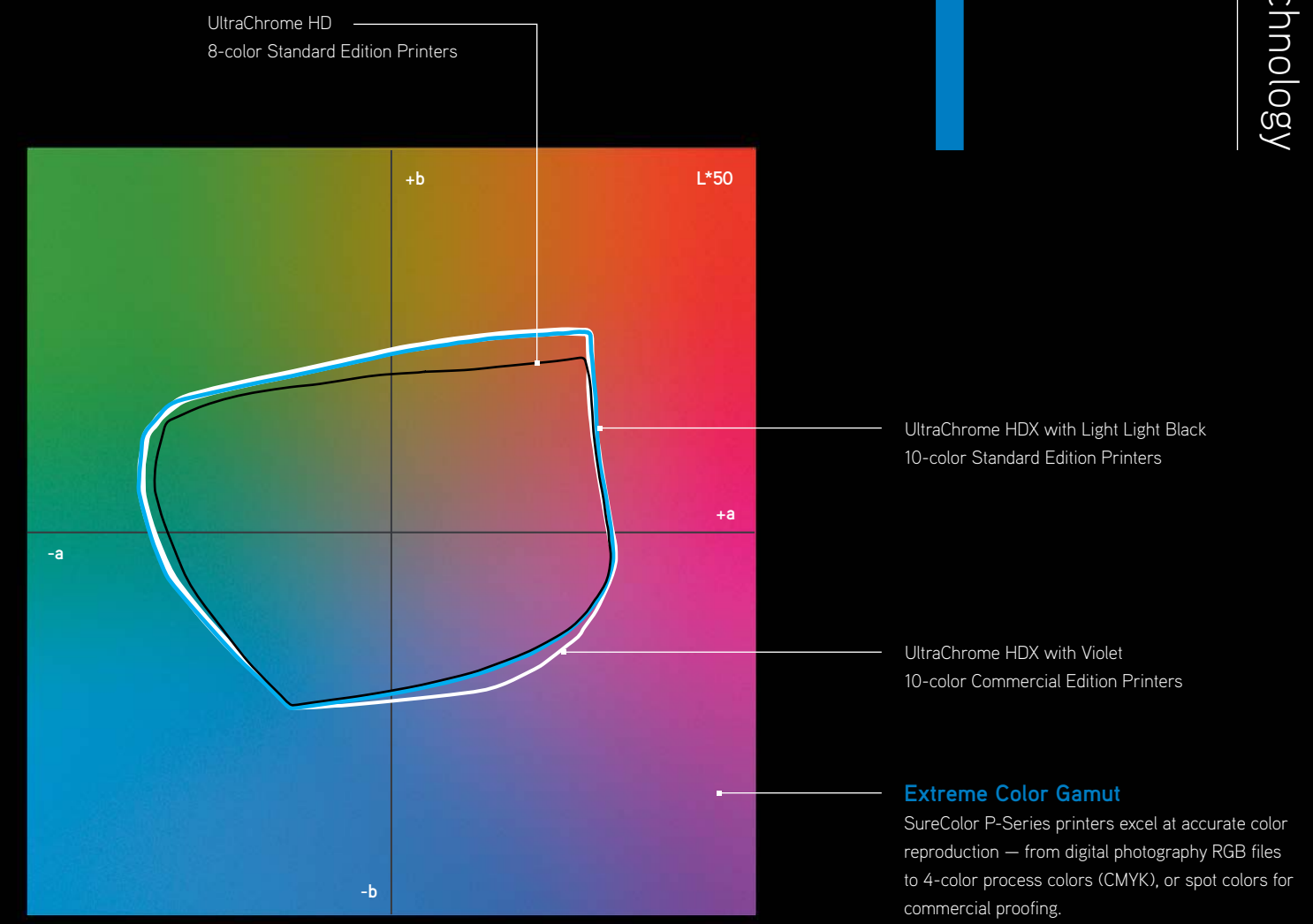
ASSORTED JELLY
MILDLY SWEET & SLIGHTLY TART
JAM SANDWICHES

GLUTEN
FREE



Epson UltraChrome HD and HDX Ink

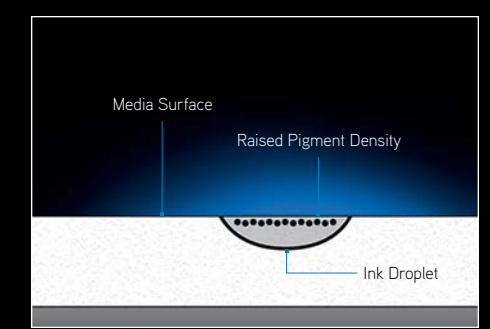
Representing our latest generation of photographic ink technology, the 8-color UltraChrome HD and 10-color UltraChrome HDX Ink sets redefine the standard for photographic imaging excellence and print permanence. Utilizing newly developed core pigments — including Black inks up to 1.5 times denser than our previous generation — the level of photographic clarity, optical density and vibrancy sets a new benchmark for Epson. And, with our latest generation of color pigment technology, we've achieved a breakthrough in print permanence, resulting in prints of exceptional quality that will define your legacy.



Extreme Color Gamut
SureColor P-Series printers excel at accurate color reproduction — from digital photography RGB files to 4-color process colors (CMYK), or spot colors for commercial proofing.

Epson UltraChrome Ink Sets	1	2	3	4	5	6	7	8	9	10	11
Epson UltraChrome HD Standard Edition	C	M	Y	K	LC	LM	LK	LLK	MK		
Epson UltraChrome HDX Standard Edition	C	M	Y	K	LC	LM	LK	LLK	O	G	MK
Epson UltraChrome HDX Commercial Edition	C	M	Y	K	LC	LM	LK	V	O	G	MK

Improved Black Density
Higher density Matte and Photo Black pigments help to produce a wider contrast ratio, resulting in optically clearer and sharper images — for both color and black-and-white prints.



New Violet Ink
By adding Violet to the gamut — expanding upon Orange and Green inks — we've achieved an industry-leading 99 percent coverage of the PANTONE FORMULA GUIDE solid-coated standard!



Print Permanence
Based upon print permanence testing conducted by Wilhelm Imaging Research Inc., our latest pigment ink technology results in prints lasting up to twice as long as our previous generation³.

