

Epson UltraChrome HD Ink

Representing our next-generation of photographic ink technology, the all-new 8-color UltraChrome HD Ink set resets the standard for photographic imaging excellence. Utilizing newly-developed core pigments — including Photo Black pigments 1.5 times denser than our previous generation — the level of photographic clarity, optical density and vibrance represents a new benchmark for Epson. And, with our latest generation of color pigment technology, we've been able to significantly improve the overall print permanence — resulting in prints of exceptional quality and legacy.

Auto-Switching Black Ink Modes

With both Photo and Matte Black inks installed, black-ink-type switching is automatic, ensuring optimal image quality on any media.

High-Capacity Ink Cartridges

Nine individual 80 mL ink cartridges allow for higher productivity, while lowering your overall ink costs.

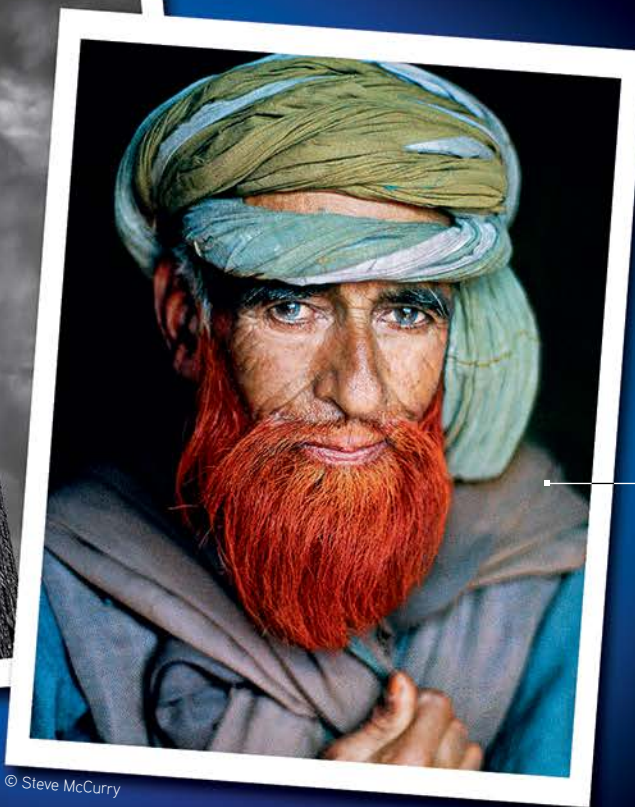


Epson AccuPhoto™ HD Screening

Advanced screening algorithms were created to optimize the dot placement and variable sizes used to create a print of exceptional quality.



© Vincent Versace



© Steve McCurry

Superior Color

New color pigment inks, along with advanced halftoning technology, produces higher color vibrancy with outstanding tonal gradations.

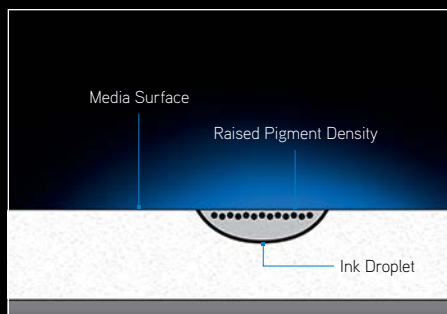
Print Permanence

Based upon print permanence testing conducted by Wilhelm Imaging Research, Inc., our latest pigment ink technology results in prints lasting up to twice as long as our previous generation¹.



Improved Black Density

Higher-density Photo Black pigments help to produce a wider contrast ratio, resulting in optically clearer and sharper images — for both color and black-and-white prints.



Professional Black & White Prints

Advanced black-and-white halftone and color toning technologies — along with three shades of black — produce gallery-quality black-and-white prints with exceptional print permanence.



© Elizabeth Carmel